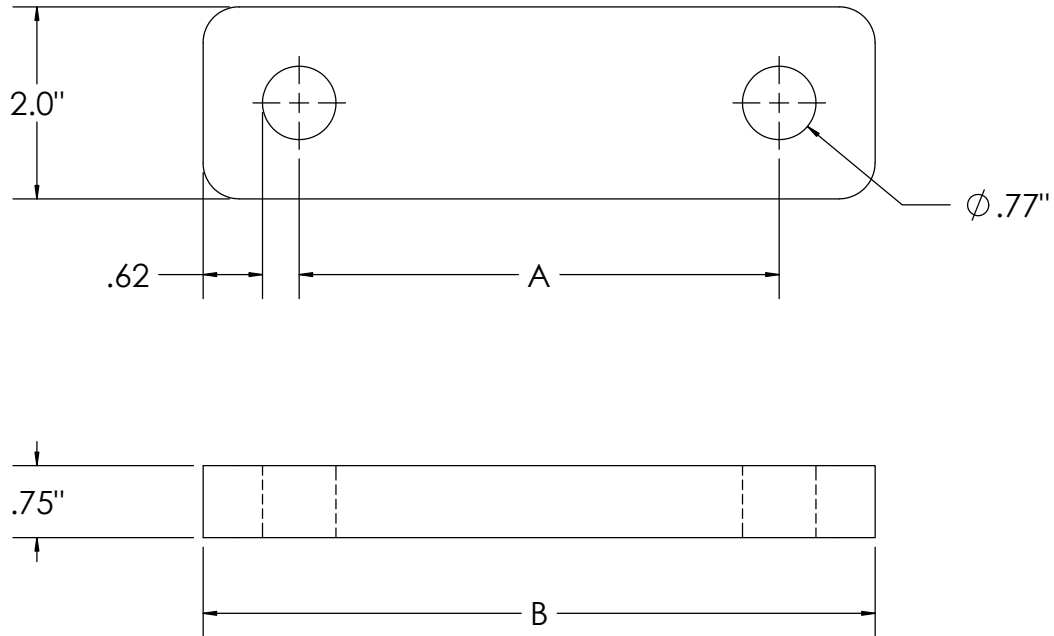


EXTENSION LINKS



MATERIAL: GALVANIZED STEEL

TENSILE RATING: 40,000 LBS.

Extension links are used to attach and maintain proper tower clearance for OPGW Dead Ends or other hardware within a transmission assembly.

CPI extension links are available in a variety of standard and custom sizes at reduced delivery times.

Catalog #	Dim. A	Dim. B	Weight
OEXL 5	5"	7"	2.4 lbs.
OEXL 10	10"	12"	4.4 lbs.
OEXL 15	15"	17"	6.2 lbs.

Please consult factory for sizes not listed here.