

"Better Products by Design"



The **CPI Lattice Tower Sign Clamp** is designed to hold a variety of signage to various sized support structures.

FEATURES

Constructed of alloy steel.

All components are Galvanized to resist corrosion.

Accepts a wide range of structural steel sizes.

The complete assembly includes:

- 2 - hex bolts
- 2 - hex nuts
- 2 - high flange washers
- 3 - clamping feet.

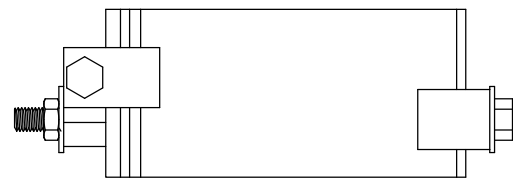
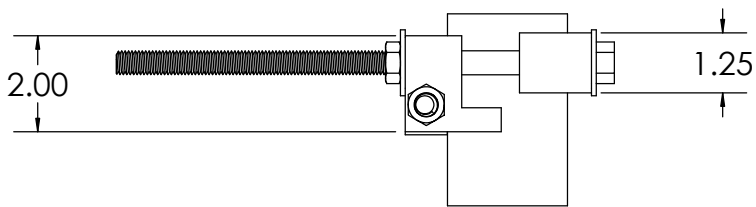
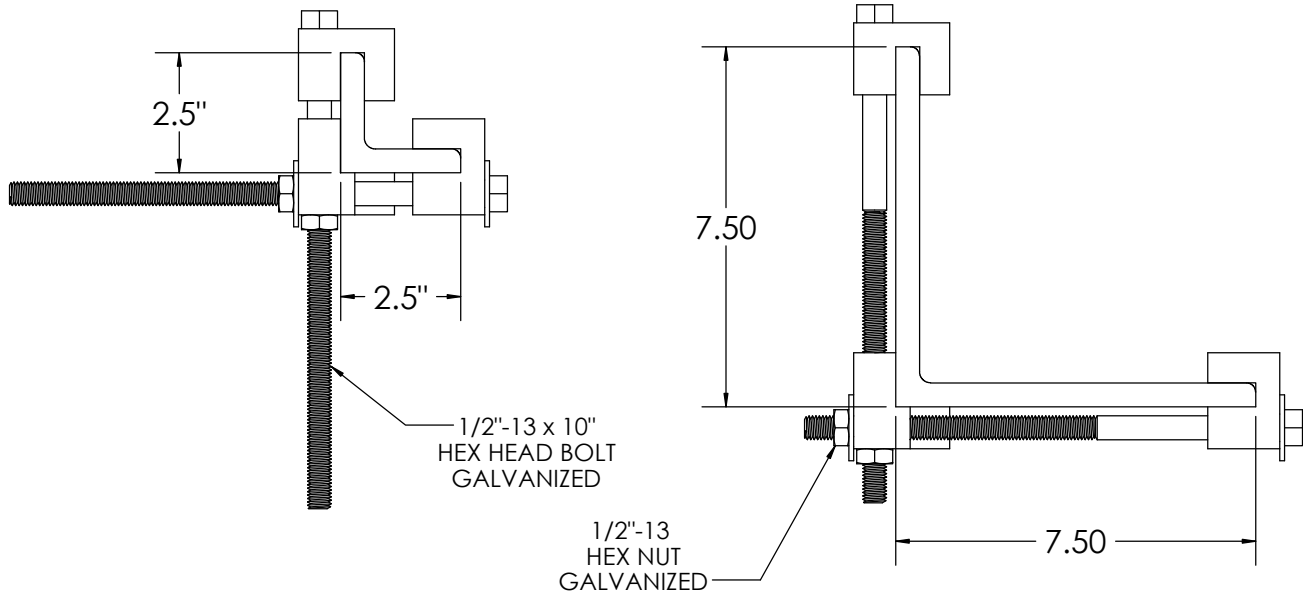
Note: Sign not included.

LATTICE TOWER SIGN CLAMP

PART # LTSC100

MINIMUM RANGE
2.5" X 2.5" X .5"

MAXIMUM RANGE
7.5" X 7.5" X .5"



NOTE: BOLT LENGTH MAY BE MODIFIED UPON REQUEST